A young person with short dark hair, wearing a green t-shirt and blue jeans, is sitting on a windowsill. They are looking out the window with a thoughtful or somber expression, resting their head on their hand. The background is a bright, out-of-focus view of a city or landscape through a large window.

Are you a teenager diagnosed with Depression?

Help us learn more about how adolescents with depression think and feel

If you are **13 to 17 years of age, right-handed, with a history of depression and no major medical conditions**, you may be eligible to participate in this research study. The goal is to understand how people your age think, feel and behave. This study will have a few visits spread across 18 months, including at least 2 MRI scans, clinical interviews, and some computer tests. *Compensation is up to \$650.*

To learn more or see if you are eligible to participate, call (203) 815-9874 or email ChoLab@yale.edu.

HIC #1111009332

Healthy Teenage Volunteers Needed



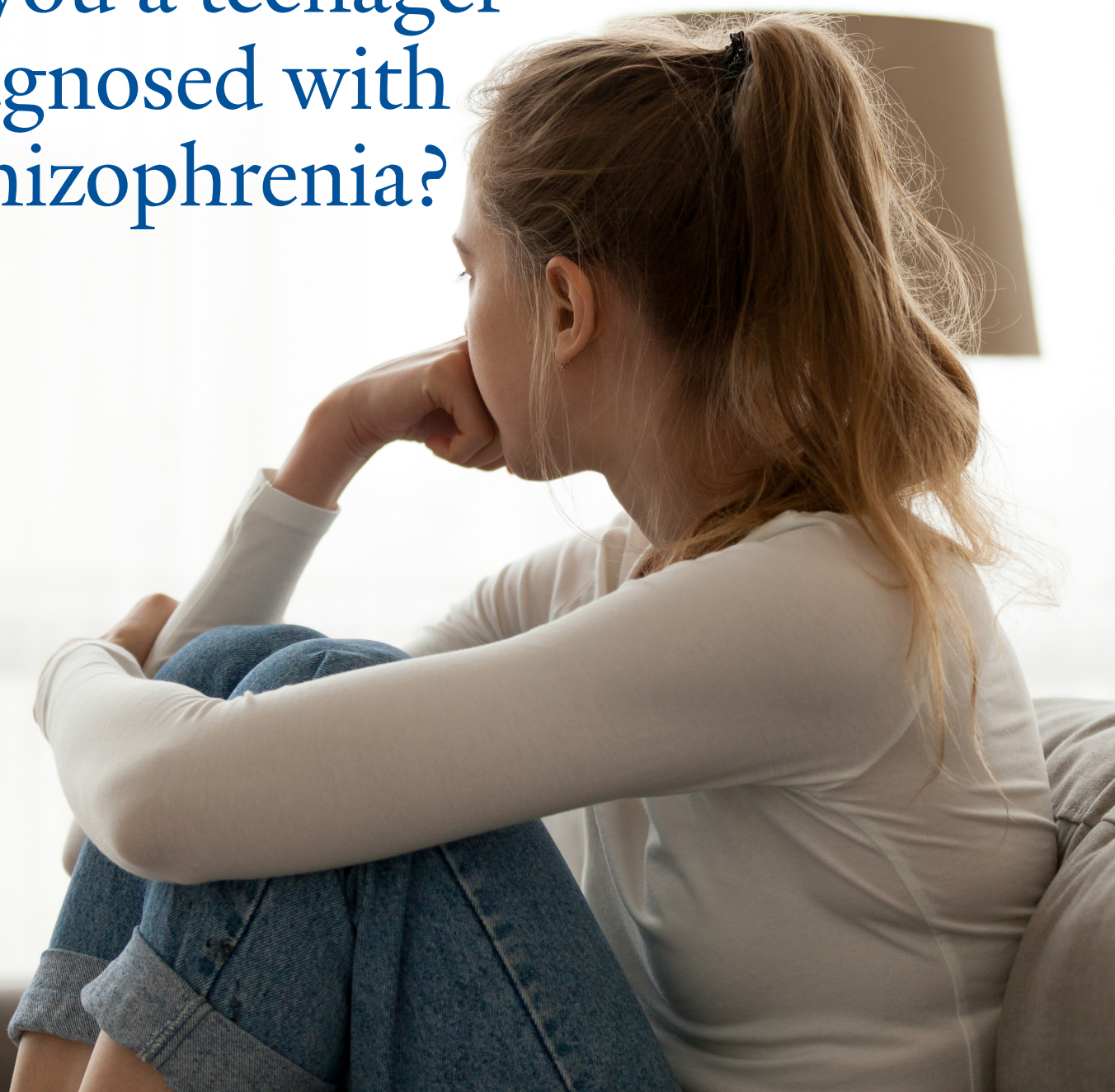
Help us learn more about how adolescents with psychiatric illness think and feel.

If you are 13 to 17 years of age, right-handed, without a history of psychiatric illness and other major medical conditions, and are not taking medications currently, you may be eligible to participate in this research study. The goal is to understand how people your age think, feel and behave. This study will have a few visits spread across 18 months, including at least 2 MRI scans, clinical interviews, and some computer tests. **Compensation is up to \$650.**

To learn more or see if you are eligible to participate, call (203) 815-9874 or email ChoLab@yale.edu.

HIC #1111009332

Are you a teenager diagnosed with Schizophrenia?



Help us learn more about how adolescents with schizophrenia think and feel

If you are **13 to 17 years of age, right-handed, with a history of schizophrenia and no major medical conditions**, you may be eligible to participate in this research study. The goal is to understand how people your age think, feel and behave. This study will have a few visits spread across 18 months, including at least 2 MRI scans, clinical interviews, and some computer tests. *Compensation is up to \$650.*

To learn more or see if you are eligible to participate, call (203) 815-9874 or email ChoLab@yale.edu.

HIC #1111009332

Is your child irritable or easily frustrated?



Brain Mechanisms of Childhood Irritability

If your child is **8 to 15 years of age**, and is **irritable or easily frustrated**, they can play an important role in research by volunteering for a *free and confidential* study. We are looking at irritability and frustration utilizing various procedures, e.g. fMRI (functional Magnetic Resonance Imaging), questionnaires, and interviews. The aims of the study are to identify brain activation and connectivity that predicts irritability and its changes over one year. **Compensation up to \$640.**

To view the website use the QR Code.

Using your phone's camera, hover over the QR code to go directly to the site.

To learn more or see if you are eligible to participate, call 203-646-3830 or email affectivelyouth@yale.edu.



HIC # 2000025557



Research Participants Needed

Brain Mechanisms of Childhood Irritability

If your child is **8 to 15 years of age**, with **little to no irritability** they can play an important role in research by volunteering for a *free* and *confidential* study. We are looking at irritability and frustration utilizing various procedures, e.g. fMRI (functional Magnetic Resonance Imaging), questionnaires, and interviews. The aims of the study are to identify brain activation and connectivity that predicts irritability and its changes over one year. **Compensation up to \$640.**

To view the website use the QR code.

Using your phone's camera, hover over the QR code to go directly to the site.

To learn more or see if you are eligible to participate, call 203-646-3830 or email affectveyouth@yale.edu.



HIC # 2000025557

Do you have a child between the ages of 5 and 15?



Brain Imaging Study of Emotion Regulation in Children

If you have a child who is **5 to 15 years old** and **has disruptive behaviors** (such as anger, irritability, or aggression), they may be eligible to participate in a free and confidential study that examines your child's social and emotional skills. This research will lead to new ways of understanding how children process and regulate their emotions.

The study will require two visits. At each visit you and your child will complete questionnaires, and your child will participate in an fMRI scan. Functional magnetic resonance imaging (fMRI) is a technique for measuring and mapping brain activity that is noninvasive and safe. You will also receive a free psychoeducational assessment describing your child's social and emotional development. The study is conducted at the Yale Child Study Center by caring and supportive research staff.

Eligibility:

- Between the ages of 5 - 15
- Significant levels of disruptive behavior (anger outbursts, irritability, noncompliance, easily frustrated)
- Be able to complete fMRI research procedure
- Be able to commute to New Haven, CT

Compensation up to \$100.

If interested, contact Megan Rutten at 203-737-7664 or email megan.rutten@yale.edu



Scan this QR code with your smartphone to send an email that you are interested.

HIC # 2000031303